

1. Cascade Lake

Trailhead is on Big Moose Rd, two miles north of Eagle Bay.

2. Brown's Tract

Enter through the DEC camping area with access to Shallow Lake.

3. Bug Lake

Trailhead is located on Uncas Rd and is shared with the trail going up the back side of Black Bear Mountain. Terrain here varies from low wetlands to mountain pine forest.

4. Eighth Lake

Enter through the DEC camping area. This offers access to Bug Lake and Eagle Lake from the south side.

5. Seventh Lake Boat Launch

The boat launch area offers access to Mohegan Lake trail up Seventh Lake Mountain.

6. White's Pond

Located in the Moose River Recreation Area off Rock Dam Rd. This access offers good low-country hunting around the back side of Mount Tom.

7. Mitchell Pond

This loop in the Moose River Recreation Area offers access through good cedar habitat country.

8. Bear Pond

With many good parking spots around the Red River Bridge, this trail along the Red River offers miles of access to all types of terrain.

9. Lost Ponds

Access located 10 miles into the Moose River Recreation Area. This trail opens into some wide, flat plains covered in scrub brush.

10. Beaver Lake

Just across the bridge over the Moose River is the access road and parking for the trailhead to Beaver Lake, with miles of low river country and standing beech.

11. Falls Pond

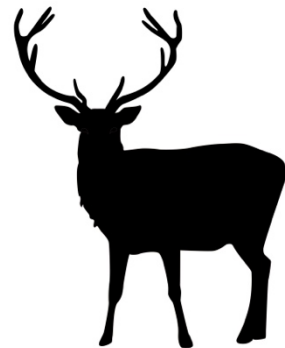
At the Falls Pond and West Canada Wilderness Area trailhead is a large parking area leading to roughly 4,000 acres of pristine wilderness.

12. Sly Pond

This old road and access to the upper end of the Moose River leads you out into the Big Plains, full of blueberries and new pine.

13. Cedar River Flow

Trails around the flow weave from beech to cedar to white pine forest.



Dial 911 for All Emergencies

Detailed maps can be purchased in the Inlet Area upon arrival.

Please remember to Leave No Trace and carry out what you carry in.

Fires – If you must build one, please do so with care. Lay-up stones and attend it at all times.

Observe all rules and regulations for hunting in New York State.

You must have a valid New York State hunting license to hunt.

One can be purchased at:

Inlet Town Clerk's Office

Monday – Friday 8:00 am – 12:00 pm
& 1:00 pm – 4:00 pm
(315) 357-5771

Inlet Department Store

(315) 357-3636

Always let someone know where you are going and when you are returning.

Sign in and out of all DEC trailhead registers.

Be prepared for unexpected weather and emergencies.

Notify the local forest ranger if long term camping (Hamilton County (518) 897-1303; Herkimer County (315) 866-6330) or if a member of your party becomes lost ((518) 891-0235).

Inlet Hunting Guide



Inlet Information Office

160 Route 28
Inlet, NY 13360

(315) 357-5501

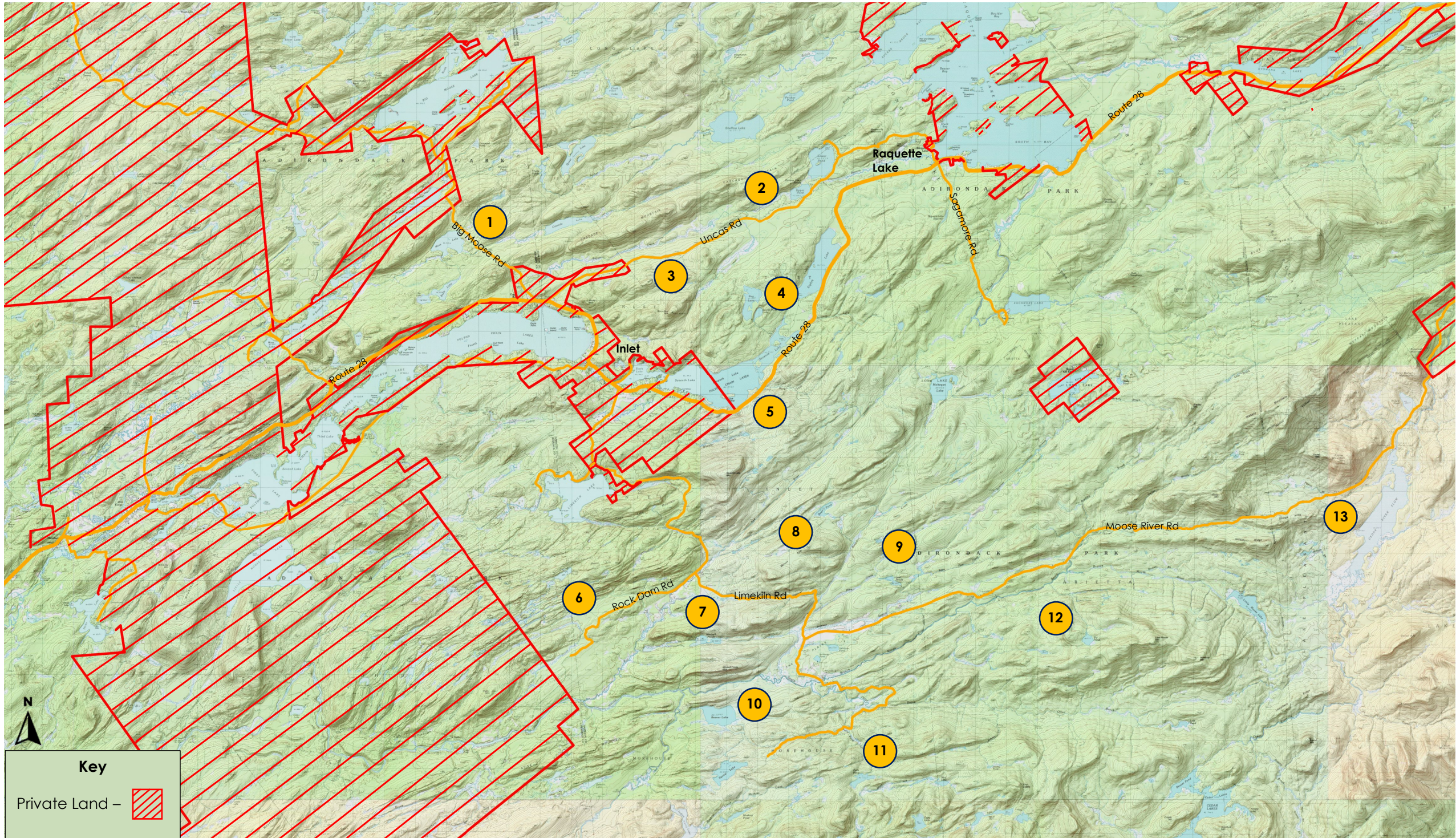
Fax: (315) 357-3570

Tourism: inletny.com
Government: townofinlet.org

Facebook: Inlet, NY Information & Events

Instagram: @inletny
info@inletny.com





Key

Private Land - 